

# Industry Meichher

## (TORCH OF INDUSTRY)

Vol - II Issue No. 2 & 3

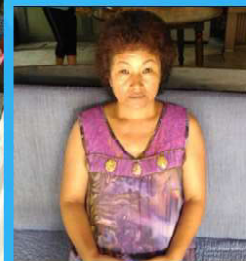
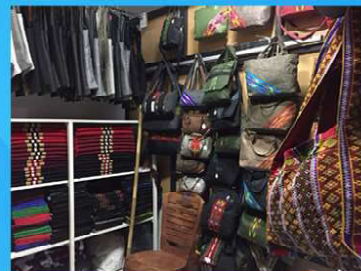
April - September 2018

A Quarterly Bulletin of the Department of Industries

Government of Mizoram, Aizawl



### Cover story pics



---

---

## EDITORIAL BOARD

<b>Editor</b>	<b>Sl.No.</b>	<b>Contents</b>	<b>Page No.</b>
J. Hmingthanmawia (9862078140) Director			
<b>Joint Editor</b> Lalhrilliana (9612166323) Functional Manager Directorate of Commerce & Industries	01.	Editorial	ii
	02.	Export Development in Mizoram	01
<b>Assistant Editors</b>			
1. Laldinpuii (9436145048) Assistant Director, Directorate of Commerce & Industries	03.	Ka'n hawikir a	04
2. Lalsangpuii (9436361231) Dy. Director (Commerce) Directorate of Commerce & Industries	04.	New PMEGP Guidelines	07
	05.	Zonunsang Handllom & Handicraft neitu kawmna	09
<b>Contributing Editors</b>			
1. C. Lalbiakthanga (9436155473) Additional Director Directorate of Commerce & Industries	06.	Thil hmuhchhuah hi thilsiamna hnuk a ni	12
2. Lalhmunsiamna (9436156448) General Manager DIC, Aizawl	07.	Hmuni Pickle, Zobawk neitu kawmna	15
3. C. Lalchhandama (9862538482) Joint Director (H) Directorate of Commerce & Industries	08.	Puantahtutwe tan kawla eng tan ta	19
4. R. Lalsangzuala (8974007250) Manager, ZIDCO	09.	Keimahni	21
5. H. Lalrochama (9436156349) Dy Manager, MIFCO	10.	Sunna	24
6. Saikungi (9436140936) Executive Officer, MKVIB			
7. C. Dawngzalala (9436756462) Industrial Promotion Officer, Directorate of Commerce & Industries			
<b>Circulation Manager</b> Lalbiakzuali (8794374025) LDC Directorate of Commerce & Industries			

**Article chhuah tur nei tan inthlahrung lovin Editorial Board Member-te mobile number-ah khian emaw *dirind-mz@gov.in* te hian a thehluh theih reng e.**

---

---

## EDITORIAL

### A NEITU

“Tunge a neitu” tih zawhna hi chhang dawn ta ila, Bible sawi dan takin “A hmangaihtu chu” tih hi a ni thei awm mang e. Kan sawrkar leh a hna pawh hi hmanagaiha, a hmingchhiat leh mualpho a hlauva. A chhan chu a hmangaih tlat alawm. Kan hna kan inthlahdah leh taimak loh chhan chu a neitu rilru kan put tawk loh avangin kan hmangaih tawk lo tihna a ni thei baw k ang.

Kan thil ngaituah danah pawh mahni a inhmangaih chuan a hna ngai pawimawhin a duat thin a ni. Keini sawrkar hnathawk pawh hian midang en lovin kan hna thatna tur en ila. Thiam leh fing ber kan nih loh pawhin, theih tawp chhuah hi chu kan tih tur a ni ngawih ngawih a ni.

Keini Commerce & Industries Department hnuai a thawkte pawh Sawrkarin hna min pek ang ang hi theih tawp chhuahin i thawk zel ang u. Tun hnaiah Sawrkarin kan District Office lamte DDO power leh motor thar tein min han thuam thar a, heng hian phurna leh thahnemngaihna min pe thar se ka duh hle a ni. Kan hnaah sawtna leh chakna min thlen ngei pawh ka beisei tlat baw k a ni. Thlahdah taka hnathawktu ai chuan thahnemngai taka thawktu an hlim zawk zel a ni.

*“Thawk zel la, i thawh-ah lawm rawh,  
Thawhrim chu chawlhna nuam a ni.”*



(J. HMINGTHANMAWIA)

---

---

## **EXPORT DEVELOPMENT IN MIZORAM**

*Vanlalpara*  
*Marketing Inspector*  
*C&I (Commerce Wing)*

Kum 1987-a Trade & Commerce Department a lo din khan a hna tura Sorkar-in a pek pawimawh zinga pahnih chu Mizoram hmun hrang hranga Market (Bazar) enkawl leh Ram dang nena insumdawn tawna kawnga hmalak a ni a, chumi kawngah chuan hna nasa takin a lo thawk tawh a, a thawk mek bawk a, amaherawhchu, duhthusam ram erawh chu kan la thleng pha lo hret niin a lang.

Export tih hmasawna atan hian Central Sorkar hian scheme tha tak mai duan a nei a chu chu- Assistance to States for Developing Export Infrastructure and Allied Activities (ASIDE) a ni. He scheme-ah hian state-in a tum ve ngai loin a zavaiin (100%) central sawrkarin export tih hmasawn nan sum hi a rawn tum a ni, he fund hi a zarzotu state kan ni ve reng bawk a, hemi hmang hian Myanmar ramri leh sumdawna kalkawng khaw pawimawhah te Export leh Import atana thil tangkai din nan (Infrastructural Development) hman a ni tawh a. Mahse, he sum hmanga hna kan thawh chhoh mek lai hian he scheme hi 2015-16 ah khan an rawn ti tawp ta a, a uiawm tak zet, chung hna la zawh loh tihpuitlin nan chuan Commerce & In-

dustries Department chuan hma a la chhonzawm mek zel a ni. He ASIDE Scheme atanga sum hmuh hmanga hnathawh langsar tak chu Zokhawthar-a Land Custom Station din puitlin nan khian tangkai taka hman a lo ni tawh bawk a ni.

He ASIDE bak atang pawh hian Export development atan Export Development Fund for North Eastern Region atangan DPR thehluh Ministry of Commerce & Industry-in a lo thlitfim hnua a lo pawmte chu Export Development atana tangkai ngei tih hriain The Agricultural and Processed Food Products Export Development Authority (APEDA) kal tlangin fund rawn pek a awm nual bawk a, hei hi a zar zotu eng

---

---

emaw zat an awm tawh a ni, chung zingah chuan Champhai Winery tih phuisuina te, Zopar pvt. company-in an pangpar an tharchhuah leh thawnchhuahna tur atan tanpuina te a lo pe tawh a, Mizoram in a zar a zo ve nual a ni. Heng bakah hian Export Development hmanga hmasawna ruhrel kan thawhte chu-

**i) R&D Centre Seling:**

He Centre tih puitlin nan hian Ministry of Commerce & Industry chuan tanpuina a rawn pe a, chumi hmang chuan Mizoram Food Processing, Research & Training Centre chu din puitlin a lo ni ta a, he Centre hi May 15, 2017 khan Chief Minister-in a lo hawng tawh a, tunah hian Food Processing leh Entrepreneurship Development atan training centre pawimawh tak a ni chho ta a, he ram neitu nihna hi Commerce & Industries Department-in a chang a, Private firm-in a enkawl hna an kalpui mek a ni.

**ii) Trade Facilitation Centre, Lawngtlai:**

Zawlnei thenkhatin an lo hmuh lawk tawh angin Mizoram chhim lam chu sumdawna kawtchhuah ropuiaha a chang chho dawn mek a, Myanmar ramchhunga lawngchawlhna hmunpui pakhat Sittwe port chu a pawh turin

Kaladan Multi Modal Transit Transport Project hmangin kawngpui laih zawh tep tawh a ni a, he sumdawna kawngpui hi amah mai chuan awmzia a nei ngawt lo, chumi atan chuan Mizoram Sorkar chuan he kawngpuiin a chhun chiahna hmun chhim tawp Zochachhuah hmunah LCS Zorinpui din turin hma a la mek a, chumi nena inhmurem chiah turin Lawngtlaiah Trade Facilitation Centre din turin bul tan a ni tawh a. EDF atanga sum hmuh 1<sup>st</sup> instalment hmangin building Block A sak zawh a ni tawh a, 2<sup>nd</sup> instalment lo kal leh mai tur hmangin Block B leh staff quarters te sak chhunzawm leh tur a ni ang. Hei hi ramdang nena kan insumdawn tawna atan hmun pawimawh tak a ni dawn a ni.

**iii) Food Testing Laboratory:**

Ramchhung leh ram pawn atanga thlai leh ei tur lo lutte hi mihring ei atan a thianghlim tawk em tih lo finfiahna tur bun nan EDF atangin sum hmuh a ni a, a hmun tur atana building sak zawh vek tawh Thenzawl chu tui leh eng (electricity) lakluhnaah harsatna a la awm hrih avang leh food testing atana bungraw manto tak tak ramdang atanga chah luhte chu a chhiat palh hlauhthawna avangin tunah hian Zemabawka Drug Testing Laboratory hmunah Health & FW Department-in hmun min pekah lo bun (install) lailawk

---

---

tura ruahman a ni a, hun rei loteah kan thlai state pawn aṅanga lakluh leh hmawmsawm tam tak ramchhung leh khawchhak aṅanga lo lutte hi mihring ei tlak a ni reng em tih finfiah theih a ni thuai dawn ta a, kan State tan hian malsawmna ropui tak turte zinga mi a ni dawn a ni.

India Sorkar laipuiin kum eng emaw liam ta aṅanga a lo buaipui tawh Look East Policy chu tunah hian a tak ram a thlen chhoh mek tak avang hian ‘Act East Policy’ tia hming thlakin hma a la chho mek a, chutah chuan Mizoram hi he Policy hlawhtlin chhoh zelna atan hmun pawimawh takah kan awm hi malsawmna ropui tak a ni chho mek a ni. Chuvang chuan ramri tlawh pawh turin kawngpui sial hna thawh mek zel a ni a, khawchhak ramte nen insumdawn tawmna atan hmasawmna ruhrel dinna tur hi Sorkar laipui hian min rawn pe zel dawn ni pawhin a lang.

Mizoram chhung, ramri hrul khaw ṅhenkhatte leh Myanmar

ramchhunga khaw ṅhenkhat awlsam zawka an insumdawn tawmna atan ‘Border Haat’ dinna tur khaw 4 (pali) chu thlan fel a ni tawh a chungte chu Hnahlan, Zote, Vaphai leh Sangau/Pangkhuah te an ni a, Bazar Ni bik siamin ramri hrula khuate an insumdawn tawmna bazar a awm dawn a ni. Chutiang chiah chuan Myanmar ram lamah pawh chuting bazar chu a awm ve bawk ang a, heng khaw chheh vel hian man tlawm zawkin an insumdawn tawm thei dawn a ni. He Border Haat dinna tur ram hi Department chuan a thlang fel tawh a, Sorkar laipui aṅanga sum hmuh a nih vele h a sak hna ṅan nghal tur a ni dawn a ni.

Export Development lama kan hmasawmna hi a tak ram a lo thlen hunah ram leilung fate hian a zar kan zo theih nan tun aṅanga kan inbuatsaih a ṅul. Sorkarin dan leh hrai zawm tur a siam ngei dawn a, dan hnuaiah sumdawmna thianghlim a kalpui theih dawn, hnamdangten zofate thal ai min thal khalh lohna tur chuan keimahni lam kan lo inbuatsaih lawk a ṅul dawn a ni.

---

---

## KA'N HAWIKIRA

*H. Thangmawia*

Tun huna pensioner, Tar awm mai mai ka nih hnuah hian ka hun kal tawh thlirin ka'n hawi kir a, sorkar hnathawk nih chak em em a, ka tawngtaina apianga ka dil thin chu chhana awmin AH & Vety hnuaiiah Tracer/S.A hna thawk turin Selesih Cattle Breeding Farm; Labour Barak (1) Bawng in (1) Mihring chenna tur (1) chauh la awmnaah chuan puanthuah telin a lo awm sa Asst. Farm Manager 1, Chowkidar 1 leh Labour (Santal) 10 te chu ka han zawm ve a. Ka hlim leh lawm zia chu sawi thiam phak pawh a ni lo

Bawng in chhunga bawng sira riak Gorkhali te nupa leh an fa te tak te te chuan Mizorama chhuak hmasa Shillong bawng lian an tih hnute chu an han sawr a, ni khatah vawi thum sawrin ni khatah litre 10 lai an han sawr mai thin chu tam kan ti thei khawp mai. Aizawl atangin motorin an rawn la thin a.

Aizawl khawpui lunlai vety District Office, Zarkawt atangin an zuar chung pawhin an hralh zo thei meuh lo. A chhan ni a lang chu, khatih hunlai khan mi tam berin Dut a thin a awm kha an hmang a. Bawngpui hnute hlutna pawh an hre pha lo va. Duh em em na pawh an nei chuang lo niin a lang. Tunah erawh chuan buhfai thlak no tur pawh dut thin ruak kan hmu pha ta meuh lo. Dut no khat tih pawh tawng upa a ni lek lek tawh a nih hi.

Ka hlawh lak hmasakin pheikhawk pum (Mangai pheikhawk) ka lei ve a. Slipper atanga mangai pheikhawka han kai chu ke a no duh chak chak khawp mai.

Hun a lo kal zel a, Department-in hma ala zel a, motor-a sem a ni ta a. Buaina tam tak awmte zingah IGP kah tuk, Curfew hnuaiia bawnghnute sem chu sawi lo mai ila. Bawnghnute duhtu an pung chak hle a ni. Hma zauh zelin Dr. H. Chalruala'n Ganavaram, Tamil Nadu atangin Department Truck hmangin vawk chi tha, a note 100 lai niin ka hre ta, a zuk tawlh chhuak a. Kawngah thlakhat dawn lai thang mahse thi loin a rawn thlen a. A pa pathum chu chithlah atan an rawn hawn tel a. Vawk chi tha (var) pawh semchhuah a ni ta a. Ar te pawh la leh zelin Ar awp keuna khawl te lak zel a ni a. He khawlin a mamawh generator lian bun a nih takah khan a thawm a ring deuh bawka. A khat tawka Selesih kawng rawn tlawh thin sakei pawh a reh hlen ta a niang, a hnuhma hmuh a awm zui ta lo. Sapui (sakei) chauh hi a bo a ni lova. Dut thin kan hmu pha ta lo va, zo vawk a bo lek lek a. Nau rual deuh chawlhni tuka Ar pahnih talh thinten Ar pakhat an kham thei ta a. Keini veng kilkhawra awmte pawhin hnaite teah vawksa leh arsa a Kg-a lei tur kan hmu ve phak ta.

---

---

Hmun hrang hrangah ran chaw leh damdawi lei tur a awm ta te, kan ran vulhten hliam leh damlohna an neih changa a cherchhiat hma a talh thinten enkawl dam hram kan tum ta te hian Mizo mipuite nunzia a va thlak nasa em!!!

Hetih lai hian ka nun leh rilru luah khattu Industries Department-ah chuan a bengvar pawlin Khuai Babu an awm tih leh Puantah Endiktu an awm tih hi an hre ve tawh a. Ka pa hi thirchher thin, silver-a Belleh Khuhhriang te pawh chhung thin a ni a. Hawlh tawn pum a hman thin te chu a thlalak en ngawt loh chuan sawifiah thiam chi pawh a ni lo. Thutthleng hniam te hi a tukin kan tuk thin a. Zingah khawvar ar khuang leh buh deng thawm a insai kalh nuk nuk a, Thingzaina chu a lianin a sei hle a. Thing sang leh rinawm tak a dawh a ngai a. Ka nu belvuak dai pawnah kan rawh a, a tukah kan zuk lak hmain bawngin an lo rap keh rum mai a. Khata ka nu mittui tla kha chu ka dam chhungin ka mitthlaah a cham dawn a nih hi.

Mizoram Union Territory kan nih atangin Assam atangin Dan thenkhat Loan leh Grant (Subsidy) dan te hmangin Industries Department-in hma an la tan ve a. Rampum Extension Officer pakhatin a awp thin kha Assitant Director (Cottage Industries)-ah dah chhoh a ni a. Rei vak lo chhungin Director te pawh dah an ni zui ta a. Suk leh sum, chempui, hachhek leh tuboh atangin hma a han la ta a. Kei pawh hian buh deng paha kea khawm zel dan kha ka theihngihl hial tawh ang. Buhden kha a bik takin

hmechhia, chhung tinte problem a lo ni nasa khawp mai. 1980 hnu tawhah khan Pukzingah an khaw post commander sualzia sawi chung a politician thenkhatin kal lo mai tura min ngen chungin ka kal lui a; a chipchiar chuan sawi lo ila. Zanah public meeting kan nei a. In 100 khua vel atangin ka thlen in khat tlatin an lo pungkhawm a. Chu khua atang chuan pakhat chauhin buhdengkawl Hire Prurchase Loan-in a dil a. Buhdengkawl nei an la awm hauh loh avangin in tinin suk leh sum buh an la deng a ni. Ka thusawi tawp lamah, “Tun atanga rei vak lovah in khuaah hian buhdengkawl a awm ang a, in buhden a ban ka beisei,” tih kan sawi chu kut an beng ringin a rei khawp mai.

Kawng hrang hranga hmasawn zelin tunah chuan kan nula tlangval te pawhin suk leh sum awm dan pawh an hre tawh lo va. Thingzaina chauh ni lovin thir lam chi te pawh chi hrang hrang a siamna te a awm ta. Vai rizai siam an bo va, vai chhang zuar an bo va, vai pheikhawk siam, vai lumet, a sawi tur a tam mai. Kan Atta tur, Maida, Wheat Vai, Suzi te pawh tualchhungah ngei siam a ni ta. Vai chauhin an siam tur emaw kan tih thil ei chi, chi hrang hrang; cake, biscuit, chips, oxygen, food item pack mawi tak tak te mizo siam tih hre lovin kan ei liam buan buan ta mai. State pawn lamah pawh eng emaw zat chu a chhuak ve tawh a ni. Plastic thil siamte hi mizo siam leh vai siam kan hre hrang em? A danglamna chu mizo siam chu a tlo zawkin a man a tlawm zawk hi a ni ber. Kan rua leh mau, hmunphiah te hi a va tangkai ta em. Thir leh cement-a siam te



---

---

pawh tualchhungah kan ti ve ta.

Vawikhat chu Mizoram Puanthui Association-in Executive Committee an nei a. Chu Committee chuan puanthui man a ti sang ta viau mai a. Mipui pawh an phun viau mai a. Chutih laia kan General Manager Pu Thanhnuna (R.I.P) hnenah, “Puanthuina hmun hi sorkar hian din ve ila, puanthui man hniam deuhin ti ila vantlang tan a tha ang, Vety pawh an bawnghnute man a hniam avangin mimalin an bawnghnute man an ti sang thei lo va. Mipui tan a tha hle a ni,” ka ti a. Pu Thanhnuna min chhanna chu, ‘Entrepreneur te kan compete chu a tha lo vang. Industries Department chu mite thilsiam tura chawk phura, kaihhruai ngaite kaihruaia tanpui an tul ang zela thurawn leh sum leh pai hmanga tanpuitu tur kan ni zawk. Thilsiam ve tur ni lovin, private party-ten an siamna tura lo tanpui hi kan tih tur a ni a. An hlawhtlinna chu kan hlawh tinna a ni, “a ti a. Hei hi Industries Department kal chhoh dan a ni ta a. Kan dil hauh loh Vairengte Fruit Plant sorkarin a mihring chawpa min barhluih chu a awm chhun a ni.

Hemi atanga rei vak lovah State sokarin Industrial Policy siamin thilsiamtute a tanpuina tur subsidy scheme 9 (pakua) kan han nei ta thawt mai a. Central lam pawhin industry dintu te tanpuina tur scheme chi hrang hrang a rawn siam ve bawk a. Heng scheme hrang hrangte mipuiin a zar an zo thiam theihnan leh industry din duhte tana kaihhruaina turin tul tlata ka hriat avangin kei

hial pawhin lekhabu pakhat , ‘INDUSTRY KAILAWN’, tih ka buatsaih ve hial a. Hmun hrang hrang atangin an tangkaipui thu te pawh ka dawng ve a ni. Hei bakah hian mipui te zirtir leh chawk tho turin Industries Department-in Industrial Motivation Campaign, Mizoram dung leh vangah nasa takin a kalpui bawk a.

Hetiang kaihhruaina leh sum leh paia tanpuina hian industry a tipung nasa ta hle mai a. Subsidy duh avang ngawta industry din tumte pawh kan indang seng ta mang lo va. A tlangpuiah chuan mi tam takin industrial unit leh production chi hrang hrang lo pung chho zel aiin subsidy an hmulian a. Thilsiam chhuah chi hrang hrang lo piang ta leh lo piang zel tura private hnung a rinawm taka lo ding Industries Department hi an hmu tel thiam vak lo bawk a. Industrial development scheme leh project kan hotu hmasaten han siam mahse a enkawltu tak tak chu kum thum tling mang lo chamte an ni zel a. Industries Department-in industry te tak te kan lo din te pawh hma zau zawk la thei tura kan din Board leh Corporation ten an han belhchhah a. A dintu department min hliab bo zel a. Chuti chungah hetiang taka mizote khawsak dan leh an rilru putzia thlak thlengtu Industries Department mi leh sa ka lo ni ve hi ka lung hi a awi hliab hliab thin. Ka service chungah ka nupui fanaute enkawl nan leh in leh lo din nan loan chi hrang hrang 12 hmuh theih leh rulh zawh te kha. KA’N HAWIKIR A Industries Department lo thil dang ka hmu miah lo.

---

---

## NEW PMEGP GUIDELINES

*Kaisangzuala*  
*Chief Executive Officer*  
*Mizoram KVI Board*

Mizote pawhin hma kan lo sawn chho zel a, mahni kutkawih ngei leh mahni thiamna hmanga sumdawna (business) siamte, thilsiamchhuahna (industry) din te kan uar ta deuh deuh a, hetih lai hian mi taima leh tumruh, hnathawk tak takte tan tanpuina pawisa nen sawrkar-in scheme tha tak tak hmangin hnung lamah min veng reng baw a, heng zinga programme/scheme tha em em mai pakhat chu **Prime Minister Employment Generation Programme (PMEGP)** kan tih fo hi a ni. Mizoramah phei chuan a larin hre lo pawh kan tam tawh awm lo ve. PMEGP scheme hi Government of India chuan kum 2008 August thla khan PMRY leh REGP scheme kaihkawp nan a lo pawm tawh a, kum 2008-2009 atang khan India ram state hrang hrangah kalpui a ni a, KVIC chu Nodal Agency atan ruat a ni baw. Tunah hian kum 2019-2020 thleng awh turin a scheme hi duanlawk a ni a, Ministry of Micro, Small and Medium Enterprises hnuaiah dah mek a ni. State/UT tinah KVIC, DIC leh KVIB te chu Implementing Agency an ni baw.

Mizoram ah pawh kum sawm chuang zen zawn kan lo hmang ve tawh a, PMEGP kaltlang hian mi tam takin eizawna nghet an lo nei tawh a ni. Central Sorkar chuan a scheme tihchangtlun nan leh a diltute awlsamna atan te he scheme guidelines hi a thlak zeuh zeuh thin a, dilna pawh hi kum thum kum li kal ta vel atang khan online-a thehluh tura tih a lo ni ta a, diltuten an dinhmun an hriat pawh zel theih nan e-tracking portal tepawh KVIC hian a buatsaih baw a ni. He scheme hnuaiah hian SC/ST/OBC/minorities te hi duhsak bik niin project cost atanga a diltu tum ve tur pawh hi 5% chauh a ni a, chutih lai chuan a margin money

subsidy erawh chu general category te aiin 10% in min pe sang zawk a ni. Margin money hmuh theih hi thingtlangah 35% of project cost a ni a, khawpuiah erawh chuan 25% of project cost a ni ve thung. Hei hi unit din thar turte tan a ni. Manufacturing unit tan project hi Rs. 25.00 lakh thleng a dil theih a, service industry tan Rs. 10.00 lakh thleng a dil theih baw. Hemi dil theih chin piah lama project cost la bang a awm a nih chuan bank-in term loan angin a pe mai tur a ni.

Tunhma chuan PMEGP loan hi vawi khat chauh dil theih a ni a, tunah erawh chuan PMEGP/MUDRA hnuaia loan lo la tawhte

---

---

tan pawh intihchangtlun nan a dil nawn theih a ni. Subsidy rate erawh chu ram pumah a in-ang vek tur a ni a, 15% project cost aʔangin tih tawp a ni. Diltu tum ve tur pawh 10% project cost aʔangin a ni tur a ni. Chutih lai chuan unit ding tawhsa tihchangtlun nan hian project cost ceiling chu manufacturing unit tan Rs. 1.00 crore lai a ni a, service/business tan Rs. 25 lakh a ni thung. North Eastern Region leh Hill States-te tan chuan he loan dil nawnnaah hian Rs. 20.00 lakh thleng margin money a lak theih a, PMEGP/MUDRA unit ti ʔhaho tan chuan chhenfakawm tak a ni dawn a ni.

PMEGP/MUDRA Loan dil nawn thei te chu – margin money a nih ang taka dawngte leh an loan lak tawhte a hun taka rultla zo tawhte an ni tur a ni a, chutih rualin a industry / business chuan hralhchhuah a nei ʔha tawkin, hlawkna pawh a tel ʔha hle tur a ni a, tihchangtlun tlak unit a ni ngei tur a ni. KVIC chuan PMEGP e-portal-ah loan dil nawn duh te tan application thehluhna (online) a dah ang a, tah chuan diltu chuan a thehlut tur a ni. District Level Agencies

(KVIC/KVIB/DIC) chuan preliminary scrutiny an neih hnuah dilna chu State Level Bankers' Committee (SLBC)-ah an thehlut tur a ni a, SLBC chuan pektlak an tih chuan loan petu tur bank-ah dilna chu an theh lut leh ang. Bank-in loan a pek hnuah margin money a dilsak ang a, chu chu kum thum TDR-a dah tur a ni. TDR chu loan latuin khawl leh bungruate a lei fel vek hnuah a loan account-ah chhun luh phalsak a ni thei a, mahse hei hi joint verification tih hnuah leh report ʔha tak a neih hunah chauh tih tur a ni. PMEGP/MUDRA 2<sup>nd</sup> loan dilna hi ram pumah rualkhai tak a tih tum a ni a, tunah chuan district tinah, population azir te, industry ʔhanduan dan azir te leh a mi chengte thiamthil mil tea pek tur a nih dawn avangin unit 10 (sawm) ang zel a hisap a ni. PMEGP/MUDRA 2<sup>nd</sup> loan dil tur hian KVIC hian kal phung awlsam zawk a duang mek bawka, unit hlawhtling tawhte tan chuan chhenfakawm tak tur niin a lang.

Zoram mipuite PMEGP scheme hnuaiyah hma i sawn zel ang u.

*Sum tam tak aiin hmingʔhat hi  
thlan zawk tur a ni*

---

---

## **ZONUNSANG HANDLOOM & HANDICRAFT CENTRE, CHHINGA VENG NEITU KAWMNA**

***IMP = Industry Meichher Palai***

***ZNS = Zonunsang Handloom***

IMP : A hmasain hun min pek avangin lawmthu ka hrilh a che.

ZNS : Harsat phah ve deuh ve.

IMP : In industry ZNS tih hi eng nge a awmzia min hrilh thei em?

IMP : Mizo tam zawk chhawr tumna rilru in nei lehzual em?

ZNS : ZNS hi ka hming Zonunsangi lam taw a ni a, kan industry hming pum chu Zonunsang Handloom & Handicraft Centre a ni.

ZNS : Nei lehzual e.

IMP : Eng tik atangin nge bul in tan a, Sorkarah in inziak lut tawh em?

IMP : In puan tahsate hi hralhna lamah harsatna in nei em? In duh ang thawktu in nei thei em?

ZNS : Kum 1986 khan production kan tan a, kum hnih chhung chu Provisional SSI Registration kan hmang a, Kum 1988 khan District Industries Centre, Aizawl-ah SSI Permanent Registration kan nei tan a ni; vide Regn. No. MZSI/O1/00189/FNL/SSI of 24.8.1988.

ZNS : Hralhna lamah harsatna kan nei vak lo. Thawktu pawh kan duh ang tawk chu Pathian zarah kan nei reng mai. Puanthuitu leh a dangte nen.

IMP : Ni khatah (a eng pawh ni se) eng zat nge raw materials in hman?

IMP : Ni kum leh kum dangah te IITF ah in kalin ka lohria a, hlawkna engte nge in hmuh le?

ZNS : A chawh rualin ni khatah la (raw materials) kg. 50 vel kan hmang tlangpui.

ZNS : IITF-ah hian kum tin ti mai ang, Mizoram Sorkar a tel phawt chuan kan la tel ve zel a; hemi chungchangah hian Industries

IMP : Chung thil ti tur chuan mi eng zatin nge hna thawk le?

Department chungah pawh lawmthu ka sawi

ZNS : Puantahtu mi sawmthum velin an thawk tlangpui.

a. Sum lama hlawkna chu a awm hran lo, a chhan IITF-ah hian Aizawl-a kan hralhna

IMP : Thawkkhat laia khawchhak unaute an haw duak lai khan in harsat phah em ?

rate-in kan hralh tlangpui a. Sorkarin a thlawnin kan bungrua min phurhsak a, thil

dang mamawhte pawh min tumsak chungin mahni senso tur neuh neuh hi a lo awm ve lo

thei lo va. Kan hlawkna ber chu kan readymade siamna atana hmanraw

mamawhte kan lei a, hei hi kan bungraw hralh ban rualin min phurh hawnsak hi a ni. Hengte

hi Aizawlah a let aia to a lei reng a ngai si a.

---

---

IMP : A nih leh district dang emaw khaw danghte in zuarin in hralh chhuak ve em?

ZNS : District dangah kan hralh chhuah dan tlangpui chu Industries Department hnuaih MAHCO-in Central Sorkar atanga tanpuina kum tina a dawn thin - District Handloom Fair leh State Level Handloom Fair District hrang hranga a buatsaih thinah hian kan tel ve ziah a. Hetah hian kan inhralh tha thei khawp a; mahse, a hlawk vak lo. A chhan chu Aizawl rate leh a aia tlawm tea kan hralh thin vang a ni ber.

IMP : Raw Material lamah hian harsatna in nei em? ZOHANDCO an lo rin theih tawh si loh a.

ZNS : Nei hran lo ve, MAHCO a la awm tho va. Bakah market-ah lei tur a awm reng a, a to deuh tih a ni mai a.

IMP : Tun hnaiah award in dawngin kan lo hria a, eng award nge, khawi hmunah nge, engtik khan nge in dawn a, indawn dan kalhmang leh a ken tel chipchiar takin min hrih thei em?

ZNS : Thei teh reng e. Pathian khawngaihna a zarah mumang lam pawha kan la man chhin ngai loh *Vasundhara NE Woman Entrepreneur of the Year (2015-16)* chu April 26, 2018 khan New Delhi-ah ka zuk dawng ve nawlh mai a. Award leh Certificate a ni mai a. Tangka fai ken tel a nei hran lo nain, a hmuna Expo an buatsaihsaihah kan handloom leh handicrafts product-te chu kan zuk pho chhuak ve a. Chu bakah Exhibition hawnnaah VIP leh mithiam rual thusawi te kan ngaithla a. Seminar thupui hrang hrang te, entirnan; Role of Women

Entrepreneurs in Skilling Northeast tih te, Communication and Marketing Strategies for Women Entrepreneurs in NE India and Brand Building - A vital exercise for small entrepreneurs te, North East Handloom and Handicrafts - Challenges and innovative approaches te, Prospects of Tourism & Wellness Industry in NE India te chu mi thiam tak takin sawiin, zawhna leh chhanna, sawihona te neih a ni a. Heng bakah Awardees Presentation te pawh a tel bawk.

IMP : Hmeichhe lam chawimawina bik a vang ang ve?

ZNS : Ni ber e.

IMP : Sawrkar atanga puihna (eg. Subsidy, Exhibition, Study Tour etc) eng emaw tal in dawng em?

ZNS : Dawng ve e. Grant-in-Aid angin a sum fai leh thil dang engmah dawng lo mah ila, IITF leh Kut chi hrang hrang Sorkarin a buatsaihah te tel ve zelin, kan products hralhna remchang min siamsak a. Chu bakah chuan, Central Sorkar atanga 10% Special Rebate chu kum thum chhung (2006-09) Festival thlan bika 10% subsidy-a kan bungraw hralhna 10% rebate chu Industries Department kaltlangin, thahnem tak a hlawmin kan dawng a, kan thatpui khawp asin.

IMP : A lo nih tak chu a, a lawmawm hle tak mai. A nih leh (a tlangpuiin) thla khata raw material mana in hman zat, hnathawktu hlawhte paih hnuah in hlawh dik tak min hrih thei em?

ZNS : Zep nak emaw Income Tax te kan awl avang hian kan account hi chipchiar tak leh fumfe takin kan vawng hran lo va; a thu

---

---

hrimin, chutianga ti tur chuan mithiam bik rawihte pawh a t̄ul hial mai thei a keini'n han ti ve dawn ta ıla, hna thawk hman lo leka buaipui te pawh a ngai mai thei bawk a. Heti lam thilah hi chuan dawt sawi palh ka hlau deuh va, ka hrihl thei lo che ni mai teh se. I mi hriatthiam ka beisei.

IMP : Thildang deuh han inzawt ta ıla, Hei, inah in thil tah leh t̄hui sa a awm dul mai a, a mawiin a t̄ha hlawn hle a, heta t̄ang hian miin an rawn lei mai nge, dawr in nei?

ZNS : Nia, dawr hi hmun dangah kan nei hran lo va, kan product-te erawh chu MAHCO Emporium leh dawr hrang hrangten zawrh turin an rawn la ve reng a. Chu bakah chuan kan chenna building 2<sup>nd</sup> Floor (top floor)-ah hian ZONUNSANG HANDLOOM EMPORIUM hi kan siam a. Eng niah pawh -Holiday ni pawhin, zing leh zan engtik hunah pawh dawr theih reng kan ni a, Sapin 24 hours-a inhawng an tih ang hi kan ni ber mai ! Dawr luah man chawi lo leh dawr nghaktu hran ruai lo kan nih avang hian a nia kan bungruate pawh tlawm bika kan hralh theih chhan chu ni. Wholesale leh retail-in in lamah hian kan pe ve reng a ni.

IMP : In thilsiam hi a t̄hat bik riauna a awm em, a awm chuan min han hrihl teh khai, mipui hriat atana i duh hrim hrim te pawh.

ZNS : Ka lawm e. Kan thilsiamte a t̄hat bik riauna hi keini chuan a awmin kan hria a, a chhan chi hrang hrang a awm a. Pakhatnaah chuan a raw materials a t̄angin kan uluk a. A pahnihnaah chuan duhthusam lo (sub-standard) hi kan hralh chhuak ve ngai lo va; man tlawm bika lei an tum pawhin kan phal

chuan lo. Hmingt̄hatna (good will) hi sum tam tak aiin thlan zawk tur a ni tih hi a tir a t̄anga vawiin thlenga kan thuvawn a la ni reng a. A pathumnaah chuan, puantahtu hi kan nei t̄ha bik a. A chhan chu kan in hi bazar hmun a ni a, a bikin khawchhakho hian bazar hnaia awm hi an duh ber a ni a. Hlahu nei reng reng an nih avangin an puantahna hmunah chenna tur kan siamsak a, thir Gate kalh theih chhungah hnathawkin an cheng a. Bazar hmunah Police hovin an man t̄hin lai pawh khan zan riak lovin kan bail chhuak zel a. Tichuan, a bikin khawchhak lam mi puantahtute hian Zonunsang Handloom-a awm hi an duh ber a nih avangin puantahtu t̄ha hi duh kan thlang a. Kan puantahtute hi kum 30 chuan awm tawhte an ni hlawn a, Pathian thu sawitute ruaiin, Synod Pastor-in vawi hnih ngawt Baptisma Service pawh kan inah a rawn tih chilh tawh a. Bakah an puantah man hi kan pe t̄ha a. Hnathawktute hian lungawi tak leh hlim taka hna an thawh ngat chuan, an hna pawh hi a t̄ha bik t̄hin niin ka hria.

IMP : Hei, i waistcoat min pek kha ka rawn ha a, ka nalh em?

ZNS : Nikum leh kum hmasa lam IITF New Delhi-ah khan i fel em manah a bikin kan han rawlhruk che kha a ni a; a thar ang mai a la nih hi, i inhme hle lehngal a. I mawiin i nalh khawp mai!

IMP : Hun t̄ha tak min pek avangin ka lawm e.

ZNS : Kei pawh le.

(Be pawp duh tan Mobile No. 8132811859/03892322094).

---

---

## THIL HMUHCHHUAH HI THILSIAMNA HNOK A NI

*Lalhrilliana*  
*Functional Manager*  
*Directorate of Commerce & Industries*

Khawvel pumpui mai hi a tirah chuan a ruaka a chhe vek a. Pathianin ni ruk chhungin thil a siam char char a. Tuma la hmuh ngai loh leh la awm ngai lo khawvel mawi tak, a chhunga ramsa leh parmawi tinreng vulna a siam ta a. Mihring ama anpui ngei mai chu a siam baw k a. Chutiang chuan, khawvel awm tirh ata Pathian pawhin thilsiam hlin bul a tan a. Khawvel chhunga thil awm zawnz zawnz hi a lo awm ta a. Thilsiam hi a va pawimawh tak em!

Pathian hian khawvel a din hma daih atangin khawvel awm dan tur leh a din tum dan a hre lawk ngei ang. Chu hriat lawkna leh ruahman lawkna chu thil hmuhchhuah kan ti thei awm e. Thil la awm ngai lo, tha si, siam dan tur duanchhuah leh riruathiamna hi thil hmuhchhuah chu a ni mai a. Amaherawhchu, thil reng reng siam a nih hma daihin a siam dan tur emaw a siam theih ngei a ni tih tute emawin an lo hre lawk khiau thin a. Chu chu tuna thil hmuhchhuah kan sawi tur hi a ni.

Khawl chi hrang hrang te, lirthei chi hrang hrang leh thlawhtheihna thlengin hmuhchhuaktu awm lo se. Hmuhchhuah ni lo se, a tak hmuh tur leh chhawr tur kan nei hauh lo vang. Chuvangin, thil hmuhchhuah hi thilsiamna hlawhtlinna hnok a ni a. Company tam tak din chhuahna pawh siam tur bik neia hma an lak vang leh midang siam theih loh

siam dan an hmuh chhuah vang a ni ber mai.

Thlawhtheihna hmuhchhuaktu thingtlang khaw naupang unau lehngal Wilbur-a leh Orville Wright-a ten thlawhtheihna an hmuh chhuah khan miin mak an ti em em a. Khawvel thil hmuhchhuah hlu ber zinga mi a ni ngei ang. Boruaka thlawhtheihna an lo hmu chhuak hi khawvelin a chhawr em em a. Thlawhtheihna hmanga eizawngtu leh zin vei vak zawnz zawnz hian a takin an chhawr a. Thlawhtheihna siamtu company deuh hian an chhawr a. An hlawhtlinna leh an company din theih chhan hnok pui ber chu American naupang Wright Brothers te'n thlawhtheihna an lo hmu chhuak hi a ni tlat a ni.

Geletine pawh hi khawvel thil hmuhchhuah pawimawh zinga sawichhuah fo a ni thin. A siam dan pawh hi company-a to

---

---

taka hralh a ni a. Mi tam tak chuan thil hmuhchhuah zinga hralh to ber niin an ngai hial thin. Lung chang pui pui an han hal darh chum chum mai chu a hun laia thil mak a tling reng a. A siam dan thuruk chu to taka hralh a ni a. A hralhna hi eng zat pawh lo ni se. A chhawrtu khawvel mipuite tan thilsiamna hnuk a lo ni ta hi a pawimawh em em a. Lung lakna atan tangkai takin hman a ni a. Kawng lai nan hman a ni bawk a. Thing kihna leh in hlui tawh thiah nan tangkai taka hman a ni ta zel a. Thil hmuhchhuah hi thilsiamna hnuk pawimawh tak a ni tih loh theih a ni lo vang. Khawvela thil pawimawh leh hmasawna hnuk zawng zawng hi thil hmuhchhuah atanga intan leh din vek an ni a. Hmuchhuaktu an pawimawh a, an thil hmuh chhuah chu company emaw thilsiamtuten a takin an han siam chhuak a. Sum dawnna hlawk leh hausak phah nan an hmang thin. Chuvangin, thil hmuhchhuah hi thilsiamna hnuk a ni a, hlawhtlinna tak tak thlent pawimawh tak a ni.

Thilsiamna hi chi hnih a awm thei awm e. Chi khat chu midang thilsiam ang siam tura hmalakna a ni a. Mizoram chhunga thilsiamna zawng zawng deuh thaw hi an ni a tih theih ang. Chutih laiin thilsiamna chi khat chu, tuma la siam ngai loh khawvel mipui tana tangkai si siam chhuahna a ni a. Thil hmuhchhuah thar a taka hman theih tura siamna a ni. Chutiang thilsiamna chu a hlawchham sam a, a hlawhtlin vek vek erawh chuan nasa takin a in vawrh sang thin. Computer pawh hi an siam chhuah atangin tun thlengin thilsiamna hlawhtling tak a ni reng a. Computer hmuchhuaktu leh siam tantu

phei chu khawvel mihausa tawn taw a ni a. A sum ngah zia hi khawvelin ha hipin an sawi luai luai a. A tan chuan computer hmuh chhuah chu thilsiamna hnuk pawimawh lutuk a ni.

Telephone landline hi tun hma kum sawmthum vel khan a lar hle a. Nei pha lo an tam bakah a thlen phak lohna hmun a tam em em a nih kha. Tunah chuan mobile/cell phone a lo chhuak a, mi tin maiin kan hum fur mai a. Mobile phone hmuchhuaktu hi a fakawmin thilsiamna hlawhtling tak arawn thlen kanti thei bawk ang. A thil hmuhchhuah company-a a hralh dawn hian company lamin 1% an offer chu a hlawk dawn lutuk a, an itsik leh ang tih a hlauh avangin a mah ngeiin 0.001% -ah a rawt thla a. Mi hausa tak a nih phah ta tho a. Hmuhchhuah hi thilsiamna hnuk tih a ti lang Chiang hle mai.

Mizo pawh hian thilsiamna din kan intih hmuh chho mek a. Heng kan thilsiamna din tur pawh hi, midang lo siam tawh siam ve ngawt ai chuan mahni hmuhchhuah ramdang pawha awm lo. Mihring tana tangkai si, hralh tla leh man man taka hralh theih tur hmuh chhuaha siam ni se. Kan thilsiamnaah kan hlawhtlingin hmuhchhuah hi thilsiamna hnuk a ni tih kan hre Chiang leh zual ang.

Puantahtu tam tak kan nei a. Heng puantahtute zingah pawh hian thluak tha leh fing fal an awm thin. Ngotekherh a var leh a sen bakah a var leh hring te'n an han tah chhuak a. Zeh tur design hrang hrang an



---

---

han hmuchhuak a, an irawm chhuak, an mahni phuah chawp ngei mai mawi bawk si tah chhuak thei an awm a. Chung mite hlawhtlinna leh mi tah ang ang tah ve ringawt hlawhtlinna chu a insanhleih khawp mai. Hei pawh hian thil hmuhchhuah hi thilsiamna hnuk a ni tih a tarlang awm e.

Thil hmuchhuaktute hi mithiam leh zir sang an ni lo fo. Zir san avanga thil hmuh chhuah aiin pian phung finna emaw mizia emaw avangin miin thil an hmuchhuak thin. Chuvangin, mimawl emaw tling lo emaw intih ngawt tur a ni lo va. Thil hmuchhuak tur chuan mi taima leh tum ruh, mi pen bak pen peih mi, mi dai bak va dai peih nih a ngai a.

Ngaihtuahna zawng zawng sawr binga thil t̄angkai siam chhuak tura sanphek hi Mizo tan a hun ta khawp mai. Thilsiamna hi han din thin mah ila phai lam aiin kan ze lo

va, kan el pha lo fo bawk a. Kan hlawk thei thin lo. Hei hi a chhan chu a siam dan emaw a siam tur kha kan rilru puak chhuak a ni lo va. Midang tih dan la chhawng emaw entawn emaw chauh kan nih vang a ni.

Thilsiamna hlawhtling tak kan din dawn chuan mahni hmuhchhuah emaw midang hmuhchhuah emaw lei sak a. Tuma la siam ngai loh siam hi kan tum a hun ve ta. Thil hmuhchhuah hi thilsiamna hnuk a ni tih hi hnam fing chuan an hre Chiang a. Thil thar hmuchhuak turin sum tam tak an seng a. An hmuhchhuah apiang siam turin hma chak takin an la a. Khawvel sum dawnna kawt chhuahah pho chhuakin an hlawhtlinpui thin. Chuvangin, Mizoram economy ti t̄hang tur leh hmasawnna tak tak nei tur chuan thil hmuhchhuah lamah nasa taka tan kan lak a ngai a. Thil hmuhchhuah hi thilsiamna hnuk a ni tih hriat a hun tawh tak zet zet a ni.

## THAWHRIM HI CHAWLHNA NUAMANI

---

---

**HMUNI PICKLE (HP) ZOBAWK, LUNGLEI NEITU PI HMUNI LEH  
INDUSTRIES MEICHHER PALAI INKAWMNA**

IM = *Industry Meichher Palai*

HP = *Hmuni Pickle (H.P.) leh a neitu Pi Hmuni, Zobawk Lunglei*

IM = A hmasain hun min pek avangin lawmthu ka hrilh a che.

1. I.M. In Industry Hmuni Pickle Industry tih hi engnge a awmzia min hrilh thei em?

H.P. Hrilh thei thei teh reng e. Ka hming hi R. Lalhmunmawii a ni a, Hmuni tiin min ko thin a, chumi chawi chuan Hmuni Food Processing tiin ka vuah ve mai a ni.

2. I.M. Engtik atangin nge in tana, Sawrkarah in inziak lut tawh em?

H.P. Ziak lut tawh e, 2013 khan a ni a, DIC Lunglei ah kan ti a ni. 1991 kum October thla atang daih tawh a thiam ka ni a, mahse regular in ka siam hman lo a, a chhan chu Anganwadi ah hian worker ka ni a, tin fa hi pathum ka nei a, ka chhangchhiat chhung chu pickle siam hi ka khawih meuh lo a ni. Tin, centre ah te kal a ngai a, chhunah chuan siamna hun a awm lova, zanah mahni ei khawp te te chauh ka siam ve thin a ni. Kum 2016 October thla khan Anganwadi worker hna chu bansanin hna bera nei turin banna ka thehlut ta a ni.

Tin, sawrkar ah hian ka inziak lut ve ta ni.

(1) Reg. No. & Date: 1506/11/0147 MSMEMICRO at 17.6.2013

(2) Licence No. 908 of 2015 (UD & PA)

(3) Licence from food safety 31891201020077 under FSS act 2016.

3. I.M. Engte nge in raw materials ni a, a hrang hrang in siamin ka hria a, uluk deuhin min hrilh thei em?

H.P. Hrilh thei e, thil chi hrang hrang ka siam ve a, chung ka thil siam te chu:

(1) Hmarcha (2) Khanghu (3) Thingthupui (4) Tawkte (5) Mautuai (6) Tumbu (7) Telhawng (8) Aidu (9) Chingit (10) Purunvar (11) Bawngsa leh (12) Arsa te a ni a, thil dang pawh siam theih tur awm ang chu ka la siam zel ang.

4. I.M. Nikhatah (a engpawh nise) engzat te nge raw materials in hman?

H.P. Nikhatah chuan a chi hrang hrang in ka siam lova, chi khat hi nikhatah ka siam tlangpui thin a. Bawngsa bik ka siam hian Rs. 2,800 – 3,000 man te a ni a. Hmarcha ah chuan kg 10 vel bak ka siam thei lo a, hmanrua in a la zo lo deuh a ni.

5. I.M. Chung thil ti tur chuan engzatin nge thawk le?

---

---

H.P. Tawkte leh hmarcha ah chuan mi pathum te an thawk thin a, sa lamah chuan mi pahnih kan thawk thin.

6. I.M. In siam (processed) sa te chu hralhna lamah harsatna in nei em? In duh ang thawktu in nei thei em?

H.P. Kan siamsa hralhchhuahna lamah hi chuan harsatna a awm ka hre lova, tin a thawktu tur pawh an tam lutuk; kan harsatna zawk chu a siam tur tam tham lakna tur sum lam hi duh angin kan ngah loh avangin a siam tur leh a thawktu tur rawihna lamah sum hi ka harsatna a ni zawk a ni.

7. I.M. A nih leh FSSAI, Food and Drug Control ti mai ang ho hian rawn sawi te an nei em? An dante zawm thain in inhria em?

Tin, packaging commodities Act lamte dan zawm tur a awm hmel si a.

H.P. A theih ang chuan zawm ve e, hei hi Food and Drug Control lam hi chuan engmah min rawn hriattir hrn lova, min rawn hriattir nise chuan an dante chu zawm zel tur lawm. Hmanni khan ka pack-na sarang hi an khap an ti a, hei pawh hi an khap tak tak a, dan anga an kal thei dawn tak tak a nih chuan bur hman leh mai ka duh a ni.

8. I.M. District dang/ khaw dangate in zuar/ hralh chhuak em?

H.P. District dang leh khaw dangah hian ka hralh ve nual tawh bawk a. Tin, phaia school kal awmte pawh hian an keng thla thin bawk.

9. I.M. Raw material lamah hian harsatna in nei em, Off season ah te?

H.P. Raw material lamah harsatna ka nei lo, season thlai pawh hmuh tur a tam chuan ka hria.

10. I.M. IITF 2016 khan New Delhi ah i kalin ka hria a, sawtpuina engnge i hmuh min hrih thei em?

H.P. Nia, IITF ah khan Industry Department te duhsakna in New Delhi ah khan ka kal ve a, tin tun dinhmun a min hlangkaia mite hriata min phochhuaktu Industry Department te chungah hian ka lawm takzet a, lawmthu ka sawi nghal bawk a.

Tin, Fair a ka kal kha hlawkpuina tam tak a awm a, State dangte stall han en a rualawhna tam tak ka hmu a, ka pickle siamsa pack-na label ka hmuh te pawh Delhi ah ka ptint tir ve nghal a, tuna ka hman lai hi a ni. Hei aia cangkang zawk leh mi mit la thei ang bera chhawpchuah zel theih hi ka tum a ni.

11. I.M. Sawrkar atanga puihna (eg. Subsidy, Exhibition, Study tour, etc) engemaw tal in

---

---

dawng em?

H.P. Sawrkar atang chuan Subsidy, Exhibition tanpuina ka la dawng lov mahse tour ah chuan kum 2017 September thla khan One Day State Level Commercial Horticulture Awareness Programme on NHB Schemes ah Lunglei Horticulture Department aiawhin Guwahati ah Lunglei aiawhin min kal tir a, tin 2017 December thlaah khan NEDPED exposure trip to Industrial Estate in Kolkata ah Planning Department in duhsak tak in min kal tir veleh a, ka lawm hle mai.

12. I.M. Kum 2014 a Lunglei a Food Festival ah khan lawman 1-na I la in kan hria a, lawmawm ka lo ti hle a. Khatah engnge i lo siam tawh reng a, kha Festival khan hlawkna a pe che em?

H.P. Kum 2014 a Lunglei a Food Fest ah khan lawman pakhatna ka lak khan Khanghu leh Thingthupui ka siam a, kha kha Pi R. Lalrodingi, Joint Director, Directorate of Industries khan tha a lo ti em em mai a lo ni a, churang chuan a season laia thlai tam tak ho hi a awm loh hun pawha ei theih mai tura siam deuh deuh kha ka riru ah a awmzui ta a ni.

13. I.M. (A tlangpuiin) Thla khata raw material mana in hman zat, hnathawktu hlawh te paih hnuah in hlawh dik tak engzat vel nge ni ang?

H.P. A tlangpuiin raw material leh hnathawktu te hlawh paih hnu ah hi chuan thla khatah Rs. 20,000/- vel hi chu ka hlawh thei a ni.

14. I.M. Kawng dang deuh han inzawt ta ila, Food Processing Industry hi Mizoram leh India tan hian thil tha zel turah i ngai em?

H.P. Food Processing Industry hi Mizoram leh India tan chuan tha thlawtin ka hria, Mizoram tan hian a tha lehzual a, mahni ram ngeiah thlai tharlam tak hrisel baw si siam chhuah theih hi a tha ka ti a, chhonzawm zel thei ila a tha ka ti a, mi tam takin eizawna ngialnghet te an lo neih phah ang. Mite tan malsawmna pawh a nih theih phah dawn a ni. Food Processing Industry hi Mizoram leh India tan thil tha lo ni zel rawh se.

15. I.M. A nih loh leh midangin eng industry te nge Food Processing hnuai hian din se thaa i rin, a chhan nen min han hrilh teh khai.

H.P. Midangin Food Processing din ve se ka tih nachhan chu kan thei tharchhuah ho te a tui leh a rah a vawn that theih dan hi din ve se ka ti.

16. I.M. I thilsiam Pickle hi a thatna riau min han hrilh teh khai, mipui hriat atana i duh hrim hrim te.

---

---

H.P. Ka thil siam hi a that bikna riau chu khawchhak leh phai lam atanga pickle kan hmuh tlanglawn ho chu hang lutuk ajino a tih han leh al lutuk a siam a ni a, ka siam hi chu ajino tel lo hang tui tak tho si a ni a, Mizote ka mila siam a ni. Tin, tunlaih chuan zunthlum leh BP sangte ei ve theih tur tel (oil) tha leh thianghlim hman chhoh tum mek zel a ni.

I.M. Hun tha tak min pek avangin ka lawm e.

H.P. Kei pawh le.

Be pawp duh tan M.B. No. 8794140303

---

---

## PUANTAHTUTE TAN KAWL A ENG TAN TA

*Peka Pu  
Khatla, Aizawl*

Puantahtute tan kawl a eng tan ta, han tih ngawt mai chu kan in sawi awk leh si ang tih a hlauhawm ang reng viau va. Amaherawhchu, sawrkar laipui kalphung leh a chet vel dan han thlir hian Puantahtute tan kawl a eng tan ta tih loh rual a ni lo ang. Puantah hi India ram pum ang pawhin mipui eizawna petu sector pawimawh tak a ni a. Agriculture tih lovah chuan eizawna a siam tam ber nghe nghe a. Chutiang a nih avang chuan sawrkar laipui chuan nasa taka chawikan tumin scheme hrang hrang puantahtute tan a buatsaih reng a.

Chung zingah chuan mipui tam zawkin kan chik lem loh GST awlna hi sawi hmasa ber ila. Sawrkar laipui chuan Goods and Service Tax dan hmangin chhiah chawi dan tur a han hmang tan ta a. Khawvel awm chhung chu awm ve ngei tura kan ngaih Tax toll gate India ram pumah tihbo a han ni ta a. Zoramah pawh Vairengte tax gate a awm ta lo. Hei vang hian bungraw phur truck rang tak takin an vei zung zung tawh a. Motor lianin Aizawl atanga New Delhi thlen nana hun an hman thin pawh ni hnih vel lain a tlem phah ta hial a.

Chutiang taka tax system tih danglam a nih lai chuan puantah (Handloom) tan tax chawi ngai lo turin GST hman a nih hnu hian sawrkar chuan a rawn ruahman ta a. He tax chawi loh hi a vannneithlak tak meuh meuh a. Thilsiamtu dangten tax sang tak an chawi laia tax pek ve an ngai lo ta mai hi Puantahtute tan kawl a eng tan ta tih lo rual a ni lo. Amaherawhchu, tax pek ngailo nih vangin Taxation Department mamawh lo leh bikbo

san ngawt tur a ni lo va. Pek ngai lo tih ti Chiang tu No Due Certificate emaw Exemption certificate lak ve tho tur a ni a. I puantah chhuah I hralh hunah chu certificate chu I pek tel a ngai a. Chu chuan a leitu harsatna awm thei nasa takin a chhawk emaw a sutkian sak dawn a ni. Hetianga sum seng lova tax clearance la mai thei sector hi sector dang an tlem khawp mai. Chuvangin, Puantahtute tan kawl a eng tan chu a ni phawt mai.

Mizoram puantahtute hian harsatna hmachhawn tur lian tak an nei a. An mahni puantahtute hian an hre mang hauh lo thung a. Enghelh pawh an enghelh tehchiam lo niin a lang. Tuna artificial trade – acrylic yarn Zoram puantahtute hmang mek hi kan state chhung leh kan thenawm hnai ho zingah sawisel kai lo mahse, hralhna zauh zel kawngah nasa takin harsatna min la thlen ngei dawn tih hi mithiam leh mi thil chik mite chuan an lo hmu lawk a.

Mizoram puantahtute hi an pung

---

---

nasa em em a. Chuvangin, puan zawrh chhuah a tam a, man man tak emaw man to taka hralh a harsa ta khawp mai. Hei hian tun atanga rei loteah ram pawn emaw hmarchhak pela puan kan hralh chhuah tul hun a hring ngei dawn niin a lang a. Acrylic yarn hi petroleum atanga siam (byproduct) a ni a. Hei hi hmarchhak state piah lam leh khawvel in sumdawn tawnna ah hi chuan hralh theih loh tluk a ni a. Natural fibre – Cotton, silk, etc. hman a nih loh chuan khawvel market-ah a luh theih loh I ti mai teh ang.

Commerce & Industries department-a kan hotute chuan he mi hre reng chung hian puantatute a theih ang chen chen zirtirna an pe reng a. NEDP hnuaiah pawh hian puantahtute kawmna leh zirtirna neia Acrylic yarn atanga Natural fibre hmang tura in zirtir turin ruahmanna siam a ni a. Sum pawh hmuh a ni tawh a. Hotute thahnemngaihna a zarah harsatna tak tak tawh hmain hma nasa taka lak a ni dawn hi puantahtute tan kawl a enna kawngkhat chu a ni leh awm e.

Puantah hi hahthlak viauvin lang mahse, hna dang ngaihtuah chuan puantah hi a hahdam a tih theih ang. Ni hlimah hna thawh a ni a, nipui khaw lum lai pawhin in kharkhip ngai lovin kawng hawng leh thlifim dawng chungin hna a thawh theih a. Hei ringawt pawh hi puantahtute tana kawl eng a tih theih baw k ang.

Sawrkar laipui chuan Act East Policy ahmaa Look East Policy tia sawi thin

kha chak leh zualin a kal pui mek a. Mizoram hi a chhawrtur tak state kan nih hmel a. Thil thawn chhuah leh lak luh a rem em em dawn a ni. Zoram atanga thil thawnchhuah tur zingah chuan puantatute kutchhuak hi a langsar leh hmatheh zinga mi a ni ngei ang.

Khawchhak ram Act East Policy-in a focus ram South East Asian countries-a chengte khi a tam zawk chu mizo anga puan feng. A then phei chu a hmei apaa puan feng dulh dulh mai an ni tih TV velah kan hmu thei reng a. Heng rama chengte kut chhuak leh mizo kut chhuak hi khai khin rual lovin mizo puan hi a tha chung chuang a. Kan rawng chi thlak leh chawhchawrawi hi hnamdang mit la leh chung chuang a ni a. Kan kut chhuak hrim hrim pawh hi a chung nung viau nia sawi a ni baw k a. Heng avang hian Act East Policy chhawr tur chu puantahtute kan ni a. Chuvangin, puantatute tan hian kaw l a eng tan ta tak tak a ni.

India ram chhungah ngei pawh hian kan puantahtute kut chhuak hi a chhuanawm em em a. Mizo puan ang ngau ngau chuan hralh chhuah a har mai thei. Amaherawhchu, kan design nalh tak tak leh mawi tak tak hi sari cheina leh an kawr tawngchham lerh ru ang reng tak chei nan bakah an in chhung cheimawina atan kan hman tir thiam phawt chuan mizo nu zawng zawng hian puantah vek mahse kan chawm seng lo vang. Chutiang zawnga hma kan lak phawt chuan puantatute kaw l hi a eng tak zet zet a ni.

---

---

## **K-E-I-M-A-H-N-I**

### **PENSION**

A hnuaiia kan tarlan kan thawhpui duh tak te hian superannuation pension-in min chawlhsan ta. Pension thlenga dam taka sorkar hna an thawh theih avangin kan lawmpui a, min chawlhsan tak avang erawh chuan kan khua a harin kan ngai dawn hle mai. An pension hlim taqk leh tha taka enjoy turin duhsakna kan hlan e.

- |  |               |
|--|---------------|
| 1. Pu Deboki Kumar Chakraborty, Project Manger (M&E) | May 31, 2018  |
| 2. T. Biakzama, Superintendent                       | May 31, 2018  |
| 3. Pu R. Lalchungnunga, Industrial Promotion Officer | June 30, 2018 |
| 4. Pu K.H. Beithie, Industrial Promotion Officer     | June 30, 2018 |

### **PROMOTION**

A hnuaiia tarlan kan thawhpui duh tak te hi May 21, 2018 khan Sub-Divisional Industries Officer-ah an kaisang a. Editorial Board chuan kan lawmpuiin mawhphurhna sang zawk an chelh thar hi tha tak leh tlin taka an tawh theih nan duhsakna kan hlan e. An hming piahah an awmna thar (post) kan han dah tel nghal e. Hetiangin -

- |                           |                                      |
|---------------------------|--------------------------------------|
| 1. Pi Lalhlupuii Khiangte | District Industries Centre, Aizawl   |
| 2. Pu Zamlian Pautu       | District Industries Centre, Serchhip |
| 3. Pu Lalrinawma          | District Industries Centre, Siaha    |
- Anni bakah hian -
4. Pi Lalmawii, from Jr. Instructress (K&T) to Sr. Craft Instructress (K&T)
  5. Pi Laldinthari, from Skilled Worker (K&T) to Jr. Instructress (K&T)
  6. Pi Laldinpuii, Assistant Director (Food) chu Project Manager (Food)-ah ni 29.8.2018 khan a kaisang a, Directorate of Commerce & Industries-ah dah a ni

### **REGULARISATION**

Kan thawhpui duh tak Pu Lalvenhima, Skilled Carpenter, District Industries Centre, Aizawl chu Muster Roll atangin a ngheta dah (regularised) a ni a. Editorial Board chuan a lawmpui tak zet a ni.

### **TRANSFER**

- A hnuaiia tarlang ang hian kan thawhpui duh tak te hi an awmna hmun sawnsak a ni.
1. Pu Lalbiakzuala Aineh, SDIO from DIC, Kolasib to DIC, Mamit
  2. Pu PC Lalvuana, Functional Manager from DIC, Mamit to DIC, Kolasib
  3. Pu H. Manga, Mechanic Helper from DIC, Kolasib to Directorate, Aizawl



---

---

**Motivation Campaign for Handloom Weavers :** Ni 28.8.2018 khan Commissioner & Secretary, Commerce & Industries Pu Zothankhuma hovin Motivation Campaign for Handloom Weavers, Thenzawl hmunah a hmasa ber atan tan a ni. He hunah hian Director of Commerce & Industries Pu J.Hmingthanmawia leh Handloom Wing Officer-ten tawiaawmin Weavers eng emaw zat an tel bawk. Kan hriat danin he Campaign Programme hi hmun 36 laiah neih tur ruahman a ni. Hei hi NEDP fund atanga hmalak a ni e.

**State Handloom Award :** Mizorama weavers hmasawna a nih beiseiin NEDP fund atangin hmalak a ni a. Award hmthei tur thlan chungchangah District Level-a selection zawh felt awh niin State Level-ah pawh fel thuai tura beisei a ni.

Mizoram Industries Services' Association (MISA) chuan infuih tharna District Office-a Association Member-te ni .... chhung khan an nei.

**MDTC Training Centre :** Mizoram KVI Board hnuai MDTC training Centre Office building sakthar chu dt.3/7/2018 khan Pu H. Rohluna, Hon'ble Minister of Commerce & Industries chuan a hawng. He building sakna atan hian Mizoram Sorkar chuan NEDP hnuai atangin Rs.200 lakhs a pe a, chumi hmang chuan building pali (4) lai sak a ni.

MDTC hi 1987 atang a din tan a ni a, Girls Hostel changtlung tak dah a ni tawh a, training chi hrang hrang kumtluanin kalpui reng a nih bakah tuna Administrative Building tha tak mai Sorkarin a sak belh sak leh hi a lawmawm hle a ni.



**MDTC Training Centre building  
Hon'ble Minister Pu Rohluna'n a  
hawng lai**

## NLUP KUT REPORT TLANGPUI

S/No.	Name of DIC	Dates	G.Total Sales	Remarks
1.	DTE & DIC, Aizawl	07-09.3.2018	51,45,787.00	A pumpuiah Com. & Ind. Chu pakhatna niin beneficiaries ti tha 1-3 thlang kan hauh
2.	DIC, Lunglei	17-18.5.2018	20,05,540.00	Best Stall-ah Com. & Ind bawh kan ni . Directorate atangin Pu C.Lalchandama, Jt. Director (H)-in a telpui.
3.	DIC, Saiha			
4.	DIC, Champhai	10-11.5.2018	5,65,874.00	Lawmman 2-na kan dawng a, chutih lain hralh tam (amount) lamah 1-3 kan hauh vek a, 3-na sale zat lei phak dang an awm lo.
5.	DIC, Kolasib	29-30.5.2018	4,15,444.00	Rank siam a ni lo a, zatna lam a sawi theih loh a, an ti tha chaweia sawmtute an nei hial.
6.	DIC, Lawngtlai	12-13.7.218	12,02,171.00	Ti tha lawman pakhatna an hauh a. Lawmpuina Certificate leh Rs.30,000/- an dawng.
7.	DIC, Serchhip	30-31.5.2018	23,74,759.00	Chief Minister khuallian a ni a. Khuallian hi Pu J.Hmingthanmawia, Director leh Pu Vanlalbera, IPO-te'n an tawiawm . Sale tam ber, Rs.19.00 lakh an ni a, a hnaih bertu Dept. Rs.2,00,000.00. Beneficiary mal hralh tam ber pawh kan benf. Carpentry, Baktawng beneficiary atang ringawt pawhin Rs. 4,20,000.00 ngawt an lei. Rank siam a ni lo va, mipui lawm leh ngaihhlut an hlawh hle a, an lun hle bawh. ('C & I kan chungnung larh e' FM. Serchhip)
8.	DIC, Mamit	13-14.6.2018	11,93,660.00	Stall lun ber leh inhralh nasa ber an nih thu report a ni. A hralh tam ber dawt line dept. in Rs. 94,000.00 an hmu ve.
<b>G. Total (from industry sector)</b>			<b>129,03,235.00</b>	<b>Beneficiaries 27196 Com &amp; Indian kan enkawl mek a ni.</b>

**NB:** District thenkhat hi rank siam a ni lo va, siam ni se chuan a pumpui hian lawmman pakhatna Commerce & Industris Department hian a hui mai awm mang e, tih mai awma mawi ni e.

---

---

## SUNNA



**T. LALENGZAUVA**

Pu T. Lalengzauva hi Hnahthial khua a ni a, Industries Department-ah hian a pa Pu T. Tlauhuaia chu Skilled Worker hna a thawh laiin a boral a. A pa aiah compassionate ground-in ni 15.10.1986 khan Semi Skilled Worker-in Handicraft Training Centre, Hnahthial-ah dah a ni.

Hnahthial-ah kum suk vel a awm hnu kum 1992 khan Craft Centre, Haulawng-ah sawn a ni a. January ni 6, 2015 khan Skilled Worker-ah a kaisang a ni.

Pu T. Lalengzauva hi thawhpui nuam tak, mi rinawm leh hotute thuawih thei tak, mahni hnaa inpezo tak mi a ni.

Kum 2014 khan chawkawng cancer a ni tih hmuhchhuah a ni a. Theih tawpin an inenkawl a, dam leh mai tura beisei laiin June ni 4, 2018 khan Ropuina Ramah min chawlhsan ta a ni.

---

---

## **LALZARLIANA**



Pu Lalzarliana hi Pu Lengkaithanga (L) leh Pi Chalnguri (L) te fa sawm zinga pasarihna niin kum 1953 ah Saitual khuaah a lo piang a. Pianpui unau pakua a nei a ni. 1985 ah Lalramengi nen Saitualah innein fapa pathum an nei a ni.

Keifang Primary Sikulah lehkha zir bul tanin, Middle Sikul chu Govt. Middle Sikul, Saitualah a zir a. Saitual a tangin Matric zo lehin kum 1982 ah NEHU hnuai a tangin PUC a zo leh a, B.A pawh eng emaw chen zirin eizawn te a ngaih avangin a zirzawm ta lo a ni.

Ni 28.4.1983 ah Industries Department ah SA Work-charge in a thawk tan a. Hemi a thawh kum vek hian I.T.I ah S.A a training nghal a. Kum 2001-ah dah ngheh niin ni 11.12.2015 ah J.E ah a kaisang a. A thihni thlengin he hna hi a vuan a ni.

Kum 2015 March thla khan nat lawk pawh awm lovin thiin a luak a. New Life Hospital-ah enkawl a ni a, a thin a chak lo a ni tih hmuhchhuah a ni a, Doctorten theih tawpa enkawlin tha takin damdawi in a tangin a chhuak a. Amaherawhchu a natna hi lo chhuak leh thinin damdawi in luhpui a ngai leh thin a. A natna hian a thlah hleitheh ta lova, ni 14.8.2018 ah Ebenezer Hospital ah admit a ni leh a, doctor leh nurse ten theihtawp an chhuah chungin ni 1.9.2018 zing dar 10:20 ah min pweihlohsan ta a ni.

Commerce & Industries Department-a a thawhpuite chuan kan ui em em a, a kalsan tak a chhungte Lalpa'nt hlamuanin awmpui zel se tih hi kan duhsakna a ni.

---

---

## **SUNNA**

### **LALRUATMAWIA PAUTU**



Lalruatmawia Pautu hi Pu P. Laldingliana, Salem Veng, Lunglei niin, ni 4.3.1981 khan a lo piang a.

Ni 10.7.2015 ah District Industries Centre, Lungleiah appoint a ni a, ni 3.8.2018 ah confirmed niin, ni 1.9.2018 ah min lo boral san ta a ni.

Commerce & Industries Department-a a thawhpuite chuan kan ui emem a, a kalsan tak a chhungte Lalpa'n thlamuanin awmpui zel se tih hi kan duhsakna a ni.